

STRATEGIES FOR CREATING A SENSE OF BELONGING IN YOUR ONLINE, ASYNCHRONOUS ENVIRONMENT

PERSONALIZED WELCOME MESSAGE

- Bring your own personality
- First impression
- Shows students there is a **human behind the Canvas shell!**

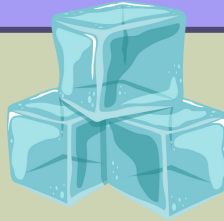
Hello

CHOOSE FUN, REASONABLE ICE BREAKERS

- Loosen up the mood and break down barriers!
- "Discussions" and External Tools are helpful here

HELPFUL TOOLS...

- Poll Everywhere
- Google Forms
- Survey Monkey
- Padlet
- Google Docs
(shared/editing access)
- Teams



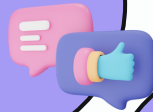
SEPARATE CHAT SPACE

- Informal and natural way to interact



INTENTIONAL AND PERSONAL FEEDBACK

- Shows students you're paying attention
- Connect things you know about them



SEEK FEEDBACK

- Regularly
- Share feedback with your students – model a growth mindset/safe environment!



Brittany Moser

Dir. of Digital Learning Design

Open Office Hours:

Tues @ 9am

Thurs @ 12pm

brittany.moser@park.edu

